

## RELIGIOUS, EDUCATION AND NOT-FOR-PROFIT REAL ESTATE

**PRESENTED BY: BOB EMEOTT** (303) 887-0063  
**MARK MEYER** (407) 835-3223

# BACKGROUND INFORMATION



## Experience

Bob Emeott serves as Senior Real Estate Advisor for Foundry Commercial's religious & educational team, bringing 33 years of commercial real estate experience to the Religious, Educational, and Not for Profit group. Prior to joining Foundry Commercial, Bob served as the Executive Vice President with Reformed Theological Seminary, which is a multid denominational seminary with six campuses, two extensions, and global ministry reach. RTS trains pastors, counselors, teachers and leaders for the 21st Century Global Church through graduate level theological education.



## Experience

Mark Meyer is a 32-year veteran of real estate development working on diverse projects including commercial office, retail, theme parks, resorts, healthcare, hospitality, schools, religious projects, museums, corporate facilities and mass transportation.

Significant projects include:

- Campus Crusade for Christ International: 250,000 SF on 90 acres, multi-phased corporate headquarter facilities valued at \$52 million.
- Moss Park Community: 1,500-acre, mixed-use master plan community in Orange County, FL.
- Wycliffe Bible Translators: 174,000 SF 100-acre, multi-phased corporate headquarters facilities values at \$42 million.

# LOCAL IMPACT ... NATIONAL REACH

## FOUNDRY PLATFORM

**258**  
ASSOCIATES

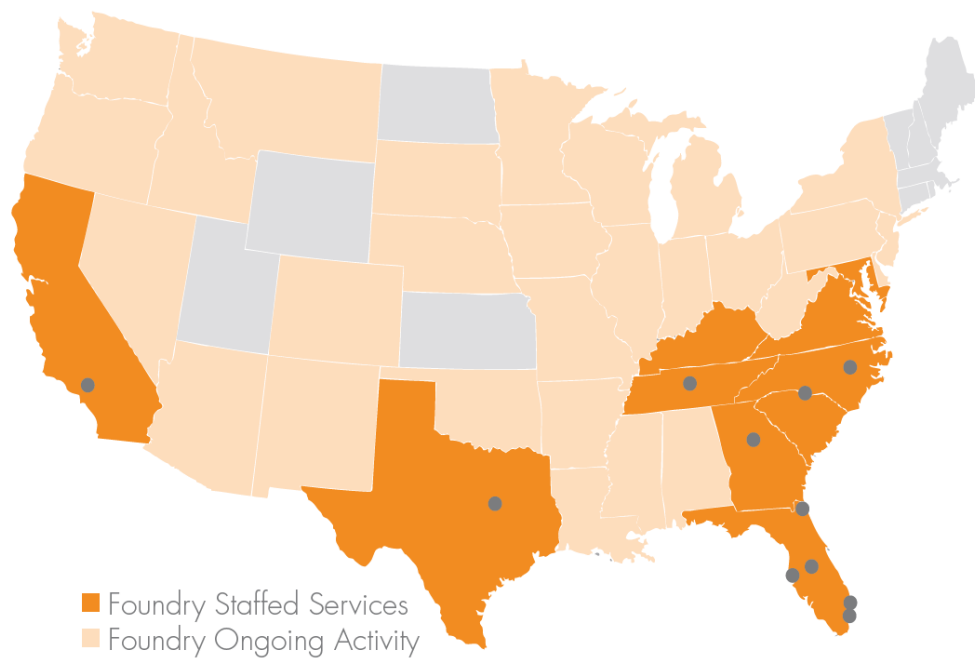
**67**  
BROKERS

**\$2.5B**  
IN BROKERAGE  
TRANSACTIONS

**253**  
MANAGEMENT  
ASSIGNMENTS

**24.6M**  
SQUARE FEET OF  
MANAGEMENT

**28.4M**  
SQUARE FEET OF  
LEASING



# WHO DO WE SERVE?

DENOMINATIONS

LENDERS

CHURCHES &  
NOT-FOR-PROFIT



THE CHURCH OF  
JESUS CHRIST  
OF LATTER-DAY SAINTS



# MAXIMIZING LIMITED RESOURCES

---



**STEWARDSHIP**

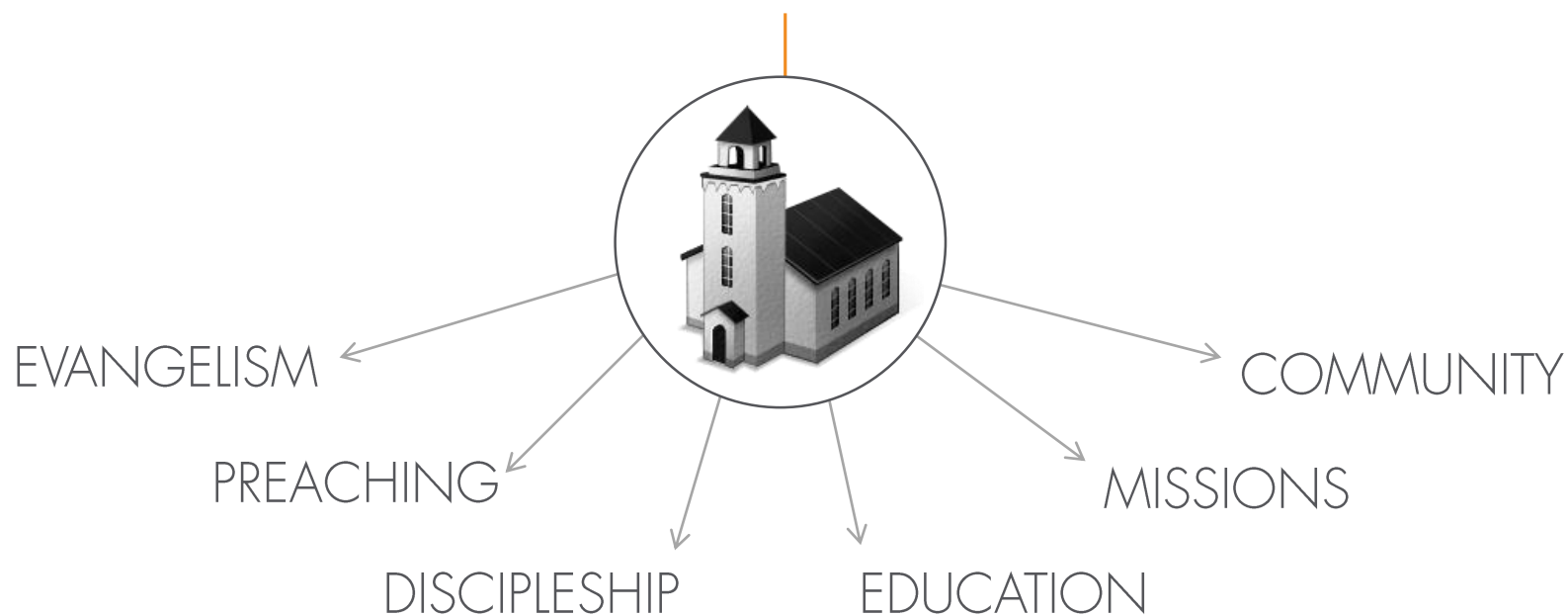
**SUSTAINABILITY**

**SCALABILITY**

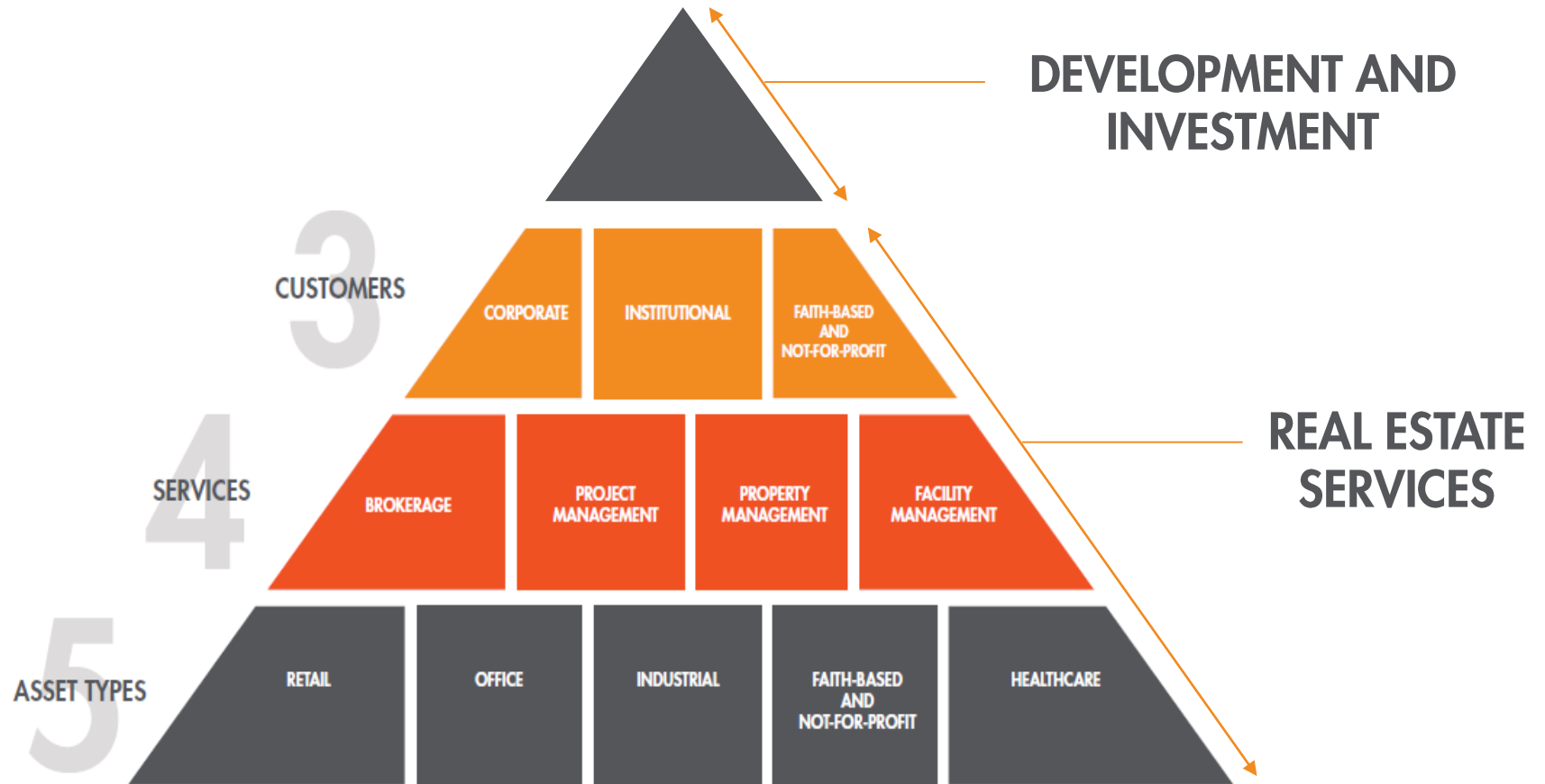
**SAVINGS**

# THE BIG PICTURE

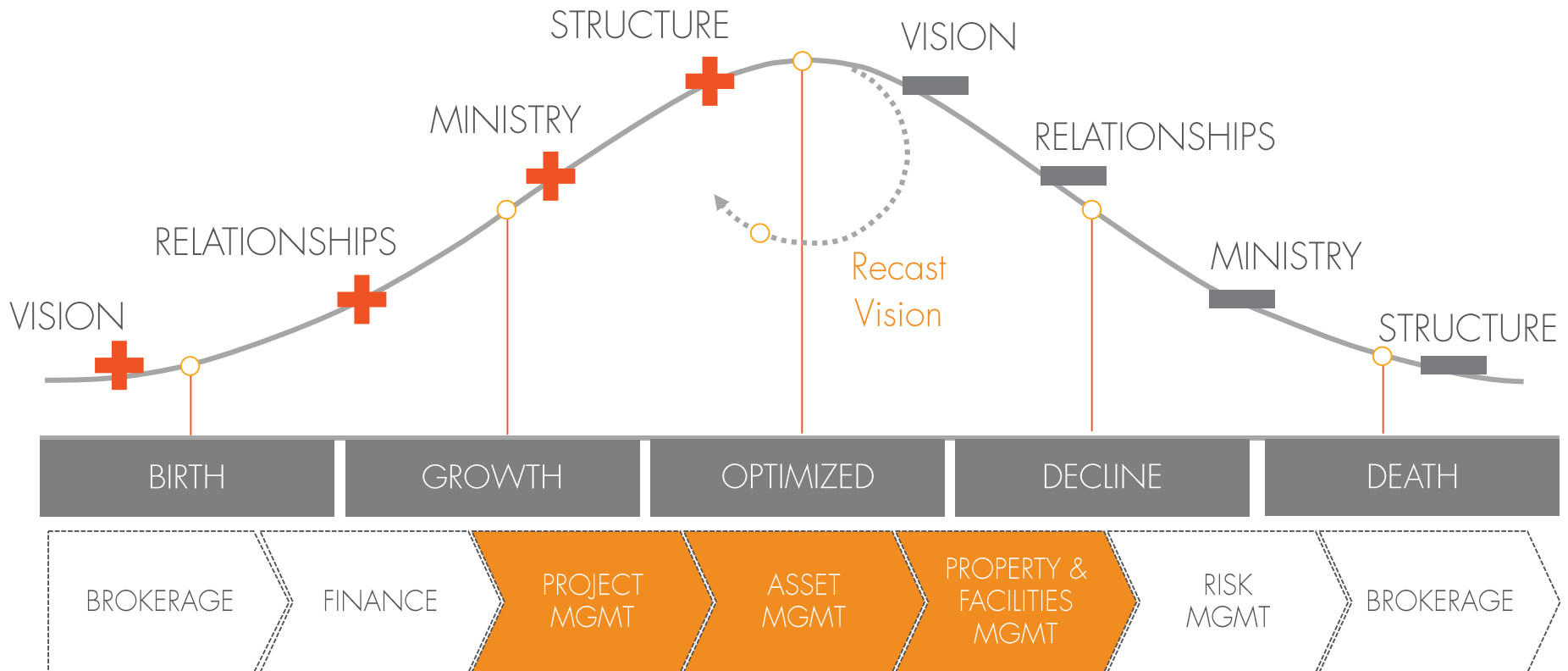
## FACILITY SERVES FUNCTION



# FOUNDRY PLATFORM



# OUR DESIRE TO SERVE





# AREAS OF EXPERTISE

---

## BROKERAGE SERVICES

We began over 47 years ago helping organizations with the purchase and sale of nontraditional real estate. This can include denomination owned property, churches, schools, community oriented properties and commercial property owned by our clients.

## CAMPUS MANAGEMENT

Managing and operating special use property can be very complex and challenging. This is why we have a team of experts solely dedicated to assisting organizations that operate their buildings at maximum efficiency, ensure safe environments, manage capital budgets and improvements and steward the property to empower them to reach their core mission.

## PROJECT MANAGEMENT

Our goal is to understand our client's vision before ever turning the first shovel of dirt. It has been an honor to partner with organizations that are positively impacting our communities, and we are proud to have developed over 1 million square feet of global ministry centers, school campuses and not-for-profit headquarters. From conceptualization and design to construction and turnover, we have a team that guides the process.

## CONSULTING SERVICES

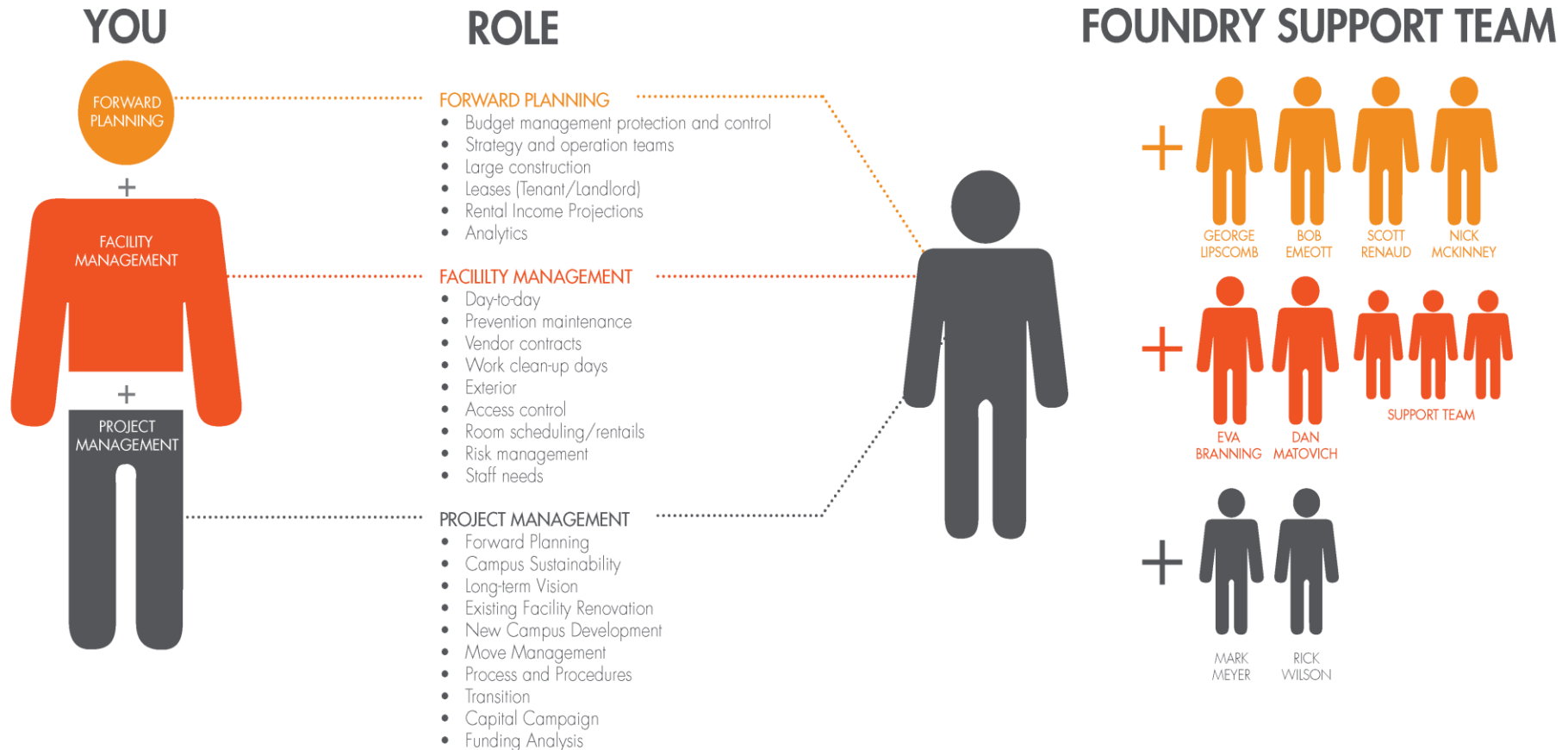
Many organizations look to us for help with strategic initiatives, and that's why understanding church real estate trends is at the heart of our company. We analyze hundreds of church sales across the United States every year to develop solutions and advise our clients on how to best navigate through their options.

# AREAS OF FOCUS

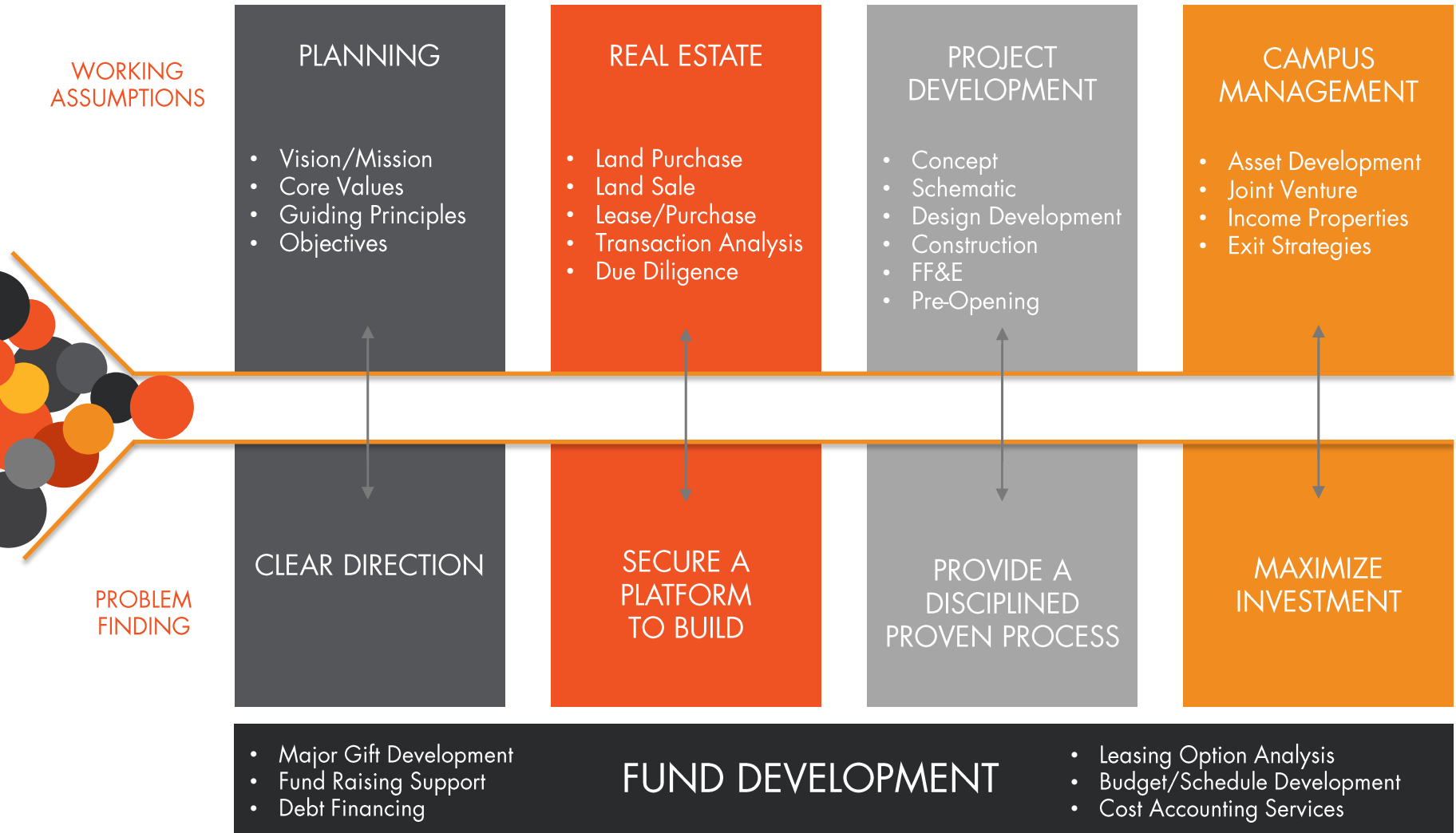
- **Operations Management – Preventative Maintenance, Repairs, Janitorial Services, etc.**
- **Energy & Environmental**
- **Emergency & Disaster Recovery Management**
- **Insurance & Risk Management**
- **Marketing & Branding**
- **Campus Security**
- **Vendor Management**
- **Fleet Management**
- **Parking Lots/Garages**
- **Lease Agreements**
- **Information Technology**
- **Capital Planning**
- **Staffing – Personnel Planning**
- **Finance & Budgeting**
- **Traffic Flow and Efficiency**
- **Project Management**



# SCALABILITY – LEVERAGING OUR PLATFORM



# PARTNERSHIP PROCESS



**QUESTIONS & ANSWERS**

**THANK YOU**