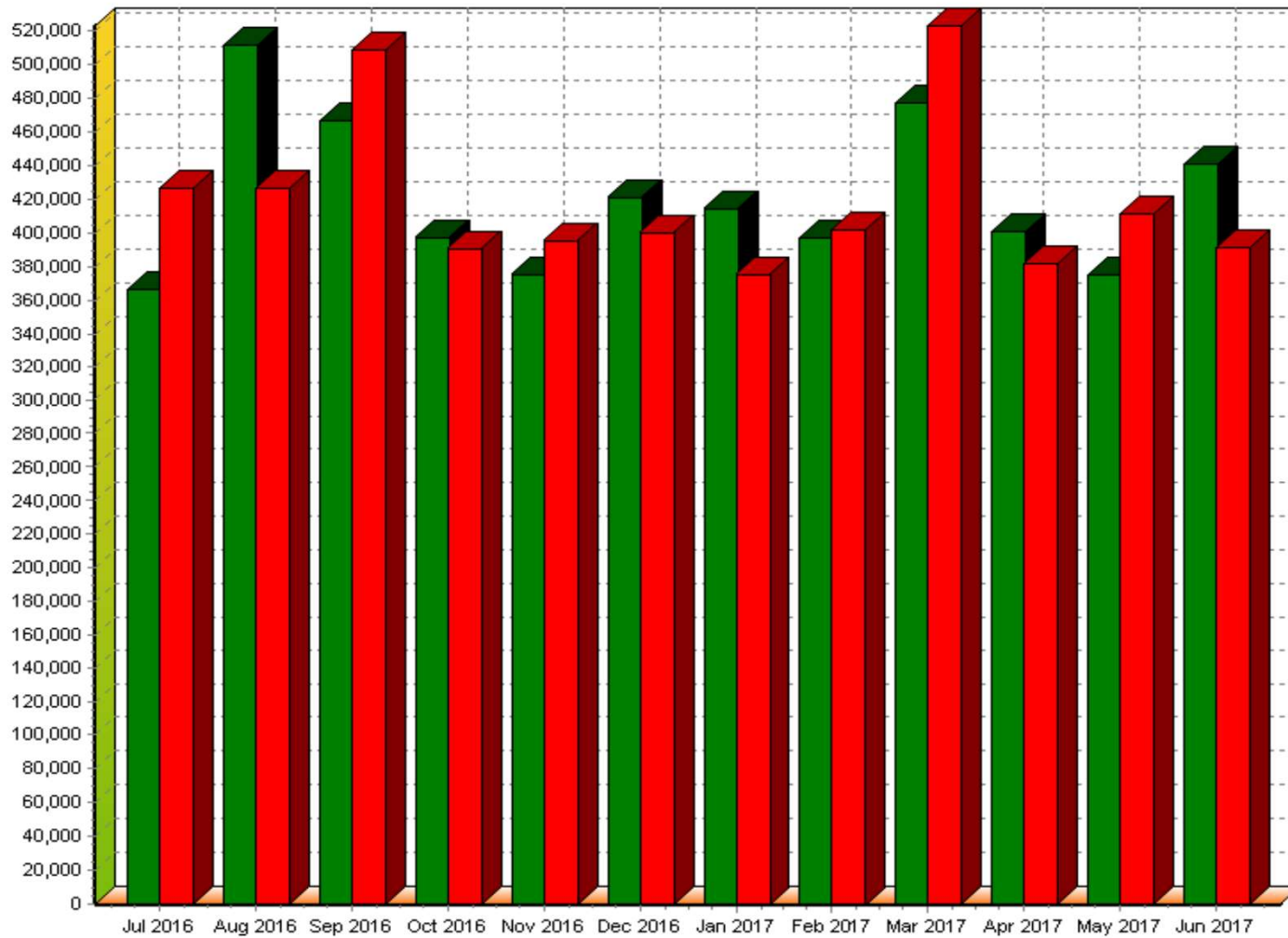


Trinity Evangelical Lutheran Church of Orlando Florida

Financial Summary of Operations

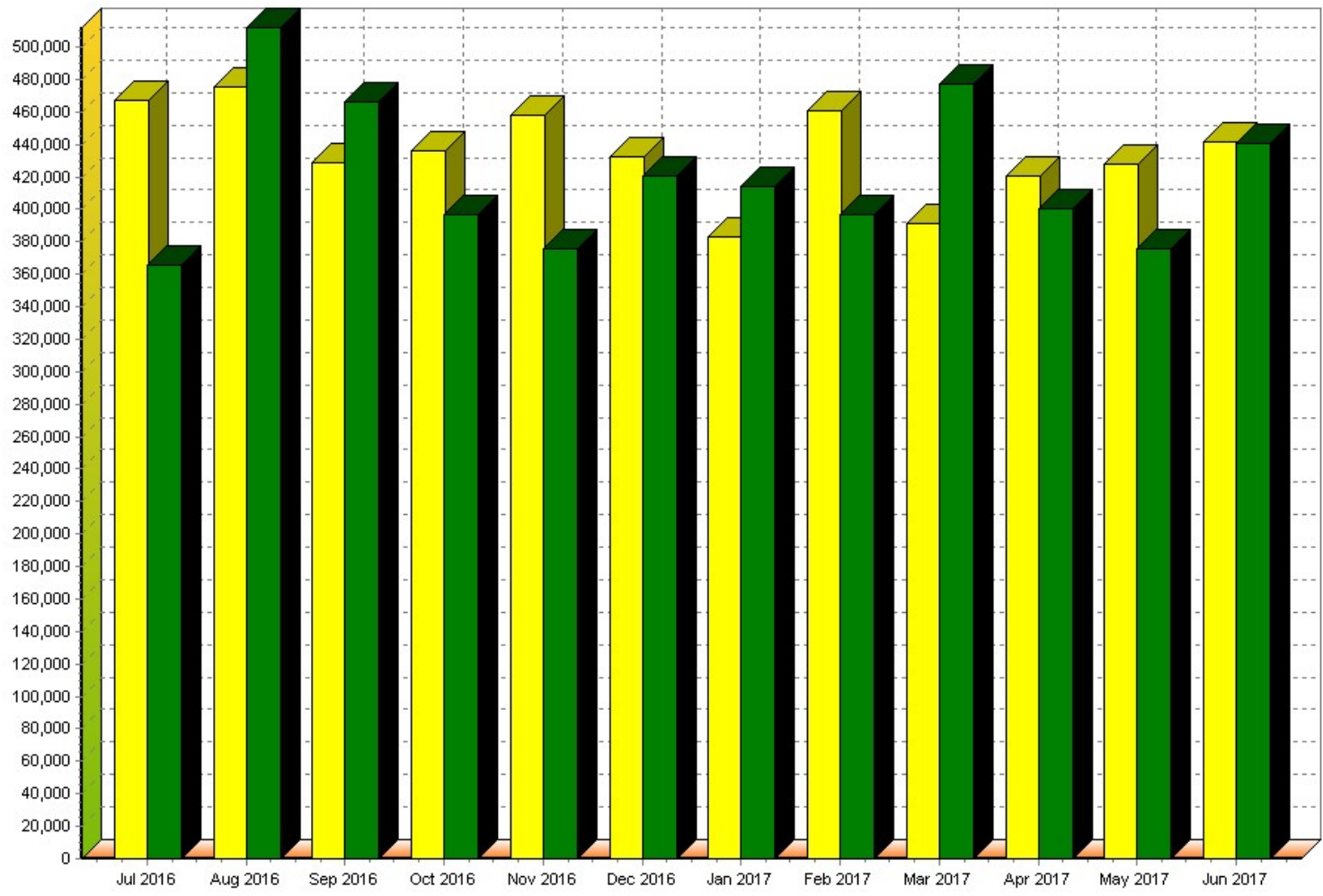
For the Period July 2016 through June 2017

(Unaudited)



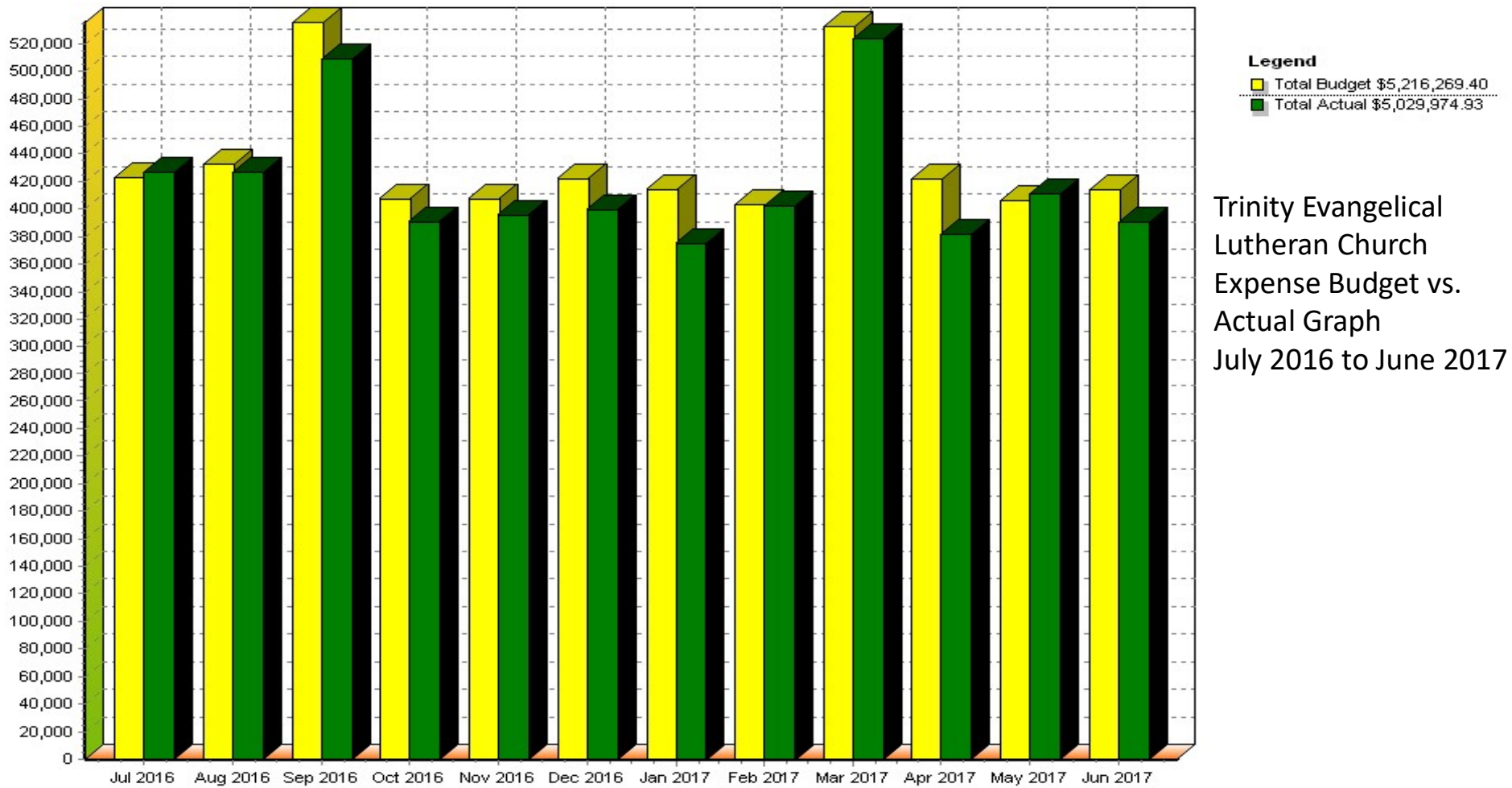
Legend
 ■ Total Revenue \$5,041,340.57
 ■ Total Expense \$5,029,974.93

**Trinity Evangelical
 Lutheran Church
 Revenues &
 Expenses Graph
 July 2016 to June
 2017.**



Legend
 Total Budget \$5,221,077.07
 Total Actual \$5,041,340.57

**Trinity Evangelical
 Lutheran Church
 Revenue Budget vs.
 Actual Graph
 July 2016 to June
 2017**



Budget Activity July 2016 to June 2017

Budget YTD	Church COC	School COC	CDC COC	Total
Income	\$1,506,370	\$702,425	\$3,012,283	\$5,221,077
Expenses	\$1,951,298	\$701,371	\$2,478,692	\$5,131,360
Net Income/ (Loss)	(\$444,928)	\$ 1,054	\$533,591	\$ 89,717

Actual Operating Activity July 2016 to June 2017

Actual YTD	Church COC	School COC	CDC COC	Total
Income	\$1,615,236	\$682,178	\$2,743,927	\$5,041,341
Expenses	\$1,957,647	\$735,614	\$2,362,768	\$5,056,029
Net Income / (Loss)	(\$342,411)	(\$ 53,436)	\$381,159	(\$ 14,688)

Church COC Actual Budget 12 Months July 2016 to June 2017

Church COC	Actual	Budget	Variance
Income	\$1,615,236	\$1,506,370	\$108,866
Expenses	\$1,957,647	\$1,951,298	(\$ 6,349)
Net Income / (Loss)	(\$ 342,411)	(\$ 444,928)	\$102,517

School COC Actual to Budget 12 Months July 2016 to June 2017

School COC	Actual	Budget	Variance
Income	\$682,178	\$702,425	(\$20,247)
Expenses	\$735,614	\$701,371	(\$34,243)
Net Income / (Loss)	(\$ 53,436)	\$ 1,054	(\$54,490)

CDC COC Actual to Budget 12 Months July 2016 to June 2017

CDC COC	Actual	Budget	Variance
Income	\$2,743,927	\$3,012,283	(\$268,356)
Expenses	\$2,362,768	\$2,478,692	\$115,924
Net Income /(Loss)	\$381,159	\$533,591	(\$152,432)